



## CONVENTION BRANDING IMAGE GALLERY

Premium locations to advertise and promote your brand, products, and services available throughout the main lobbies of the convention center to reach ASMB's 2023 attendees as they explore the meeting.

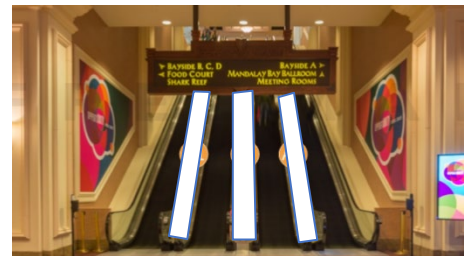
### **Benefits:**

- Includes production and installation of graphics of item or package purchased.
- Graphics prominently displayed in select high-traffic areas in the convention center.
- Added visibility to drive attendance to your booth.

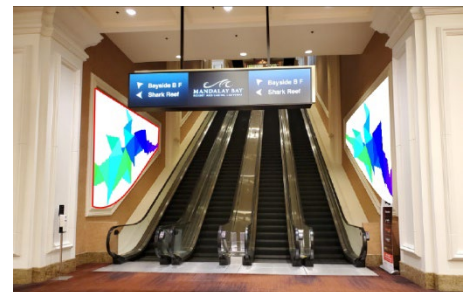
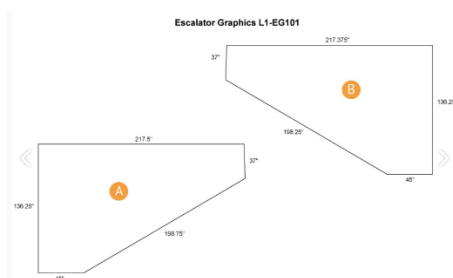
### **LEVEL 1 BRANDING PACKAGE \$60,000**

Includes:

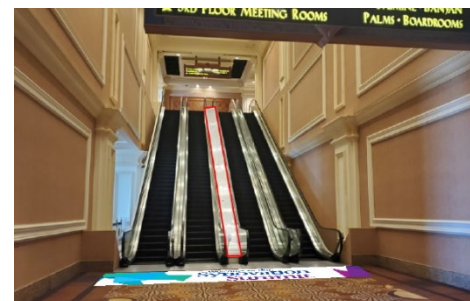
- **Escalator Runner Graphic (Set of 3)**
  - Single-sided graphic cling to adhere to the middle of Escalator going to level 2
  - Location: **L1-ER101 (A1, B, A2)**
  - Size: 12"W x 84"H / B: 24"W x 84"H



- **Escalator Wall Graphic (Set of 2)**
  - Single-sided graphic cling to adhere to the walls on each side of the Escalator
  - Location: L1-EG01, A & B
  - Size: see graphic



- **Floor Graphic**
  - One (1) 9' Single-sided graphic cling
  - In front of the Escalator
  - Location: L1-EG01, A & B





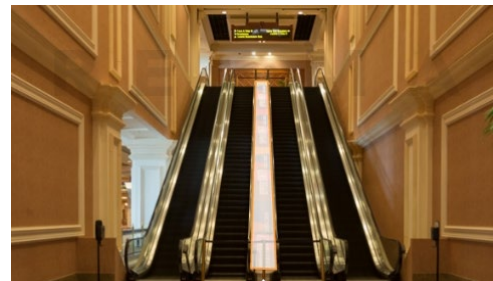
## **LEVEL 2 BRANDING PACKAGE      \$60,000**

Includes:

- **Escalator Wall Graphics (Set of 2)**
  - Single-sided graphic cling to adhere to the walls on each side of the Escalator
  - Location: L2-EG101
  - Between Level 2 and 3 North Mandalay Foyer
  - Size: (A) 18'-.5"W x 86"H
  - (B) 18'-4.375"W x 86"H



- **Escalator Runner**
  - Single-sided graphic cling to adhere to the middle of Escalator going to level 3
  - Location: **L2-ER101**
  - Size: 23.75"W x 82'H



- **Floor Graphic**
  - One (1) 9' Single-sided graphic cling
  - In front of the Escalator
  - Location: L1-EG01, A & B





**Mandalay Level 2      \$35,000**

- **Shoreline Wall Graphic**
  - Large wall graphic in exhibit Hall space
  - Location: L2S-WG1
  - Size: 56'-10.5"W x 12'-4"H



***\*Additional Opportunities being Considered, check back, or reach out to sales.***